



ONE-Touch 12-VOLT PATIO AWNING

TRACTIONER

INSTRUCTIONS

052948-001

Carefree Alumaguard awnings only, require that you install an Alumaguard Tractioner on each end of the roller assembly.

- A. Grasp the Alumaguard Tractioner and O-Ring (shown in figure 1a) and disconnect one end of the O-Ring from the keeper on the Tractioner.



Figure 1A

- B. Fully retract the awning and then extend it just enough to take tension off of the alumaguard wrap. (approximately 1/8 of a turn) Wrap the Tractioner around the roller tube and re-connect the O-Ring to the keeper.

- C. Position the Tractioner as shown in figure 1b and 1c.

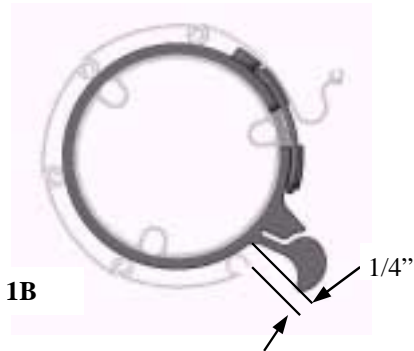


Figure 1B

- D. Extend the awning and verify that the Alumaguard Tractioners are engaging the Alumaguard properly. When operating properly, the Alumaguard Tractioner will engage the end of the Alumaguard cover and move it up and over the roller assembly. If required, reposition tractioner to adjust engagement with the Alumaguard.

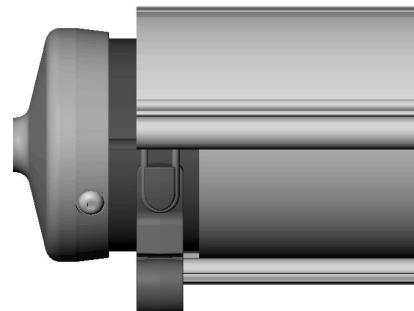


Figure 1C